

MAINLINE

February 1984
MODELER

Building Construction • DL&W 4-8-4 • Stonework • Brass Caboose



\$2.75

Higher in Canada

THE LAGRANGE DEPOT

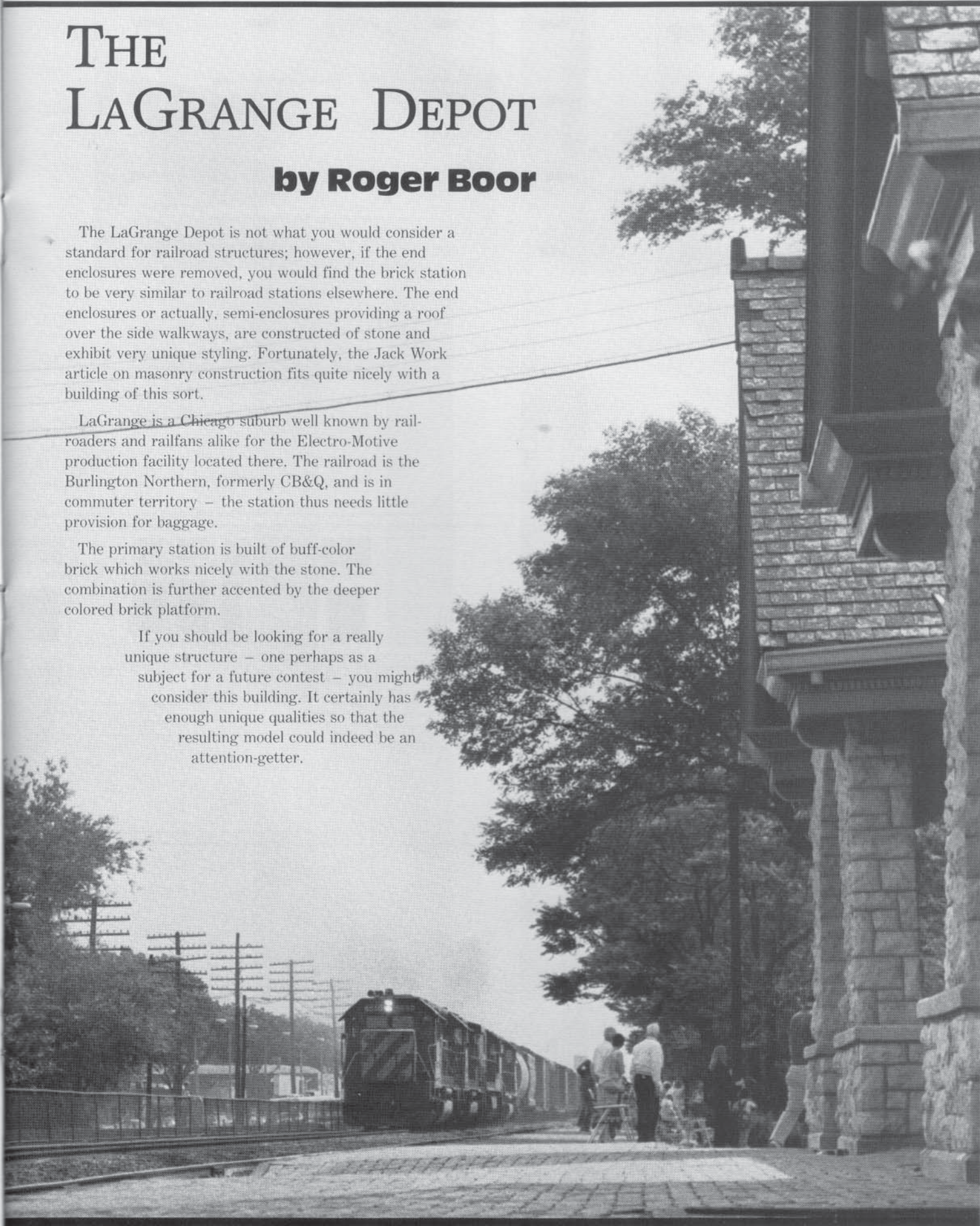
by Roger Boor

The LaGrange Depot is not what you would consider a standard for railroad structures; however, if the end enclosures were removed, you would find the brick station to be very similar to railroad stations elsewhere. The end enclosures or actually, semi-enclosures providing a roof over the side walkways, are constructed of stone and exhibit very unique styling. Fortunately, the Jack Work article on masonry construction fits quite nicely with a building of this sort.

LaGrange is a Chicago suburb well known by railroaders and railfans alike for the Electro-Motive production facility located there. The railroad is the Burlington Northern, formerly CB&Q, and is in commuter territory – the station thus needs little provision for baggage.

The primary station is built of buff-color brick which works nicely with the stone. The combination is further accented by the deeper colored brick platform.

If you should be looking for a really unique structure – one perhaps as a subject for a future contest – you might consider this building. It certainly has enough unique qualities so that the resulting model could indeed be an attention-getter.

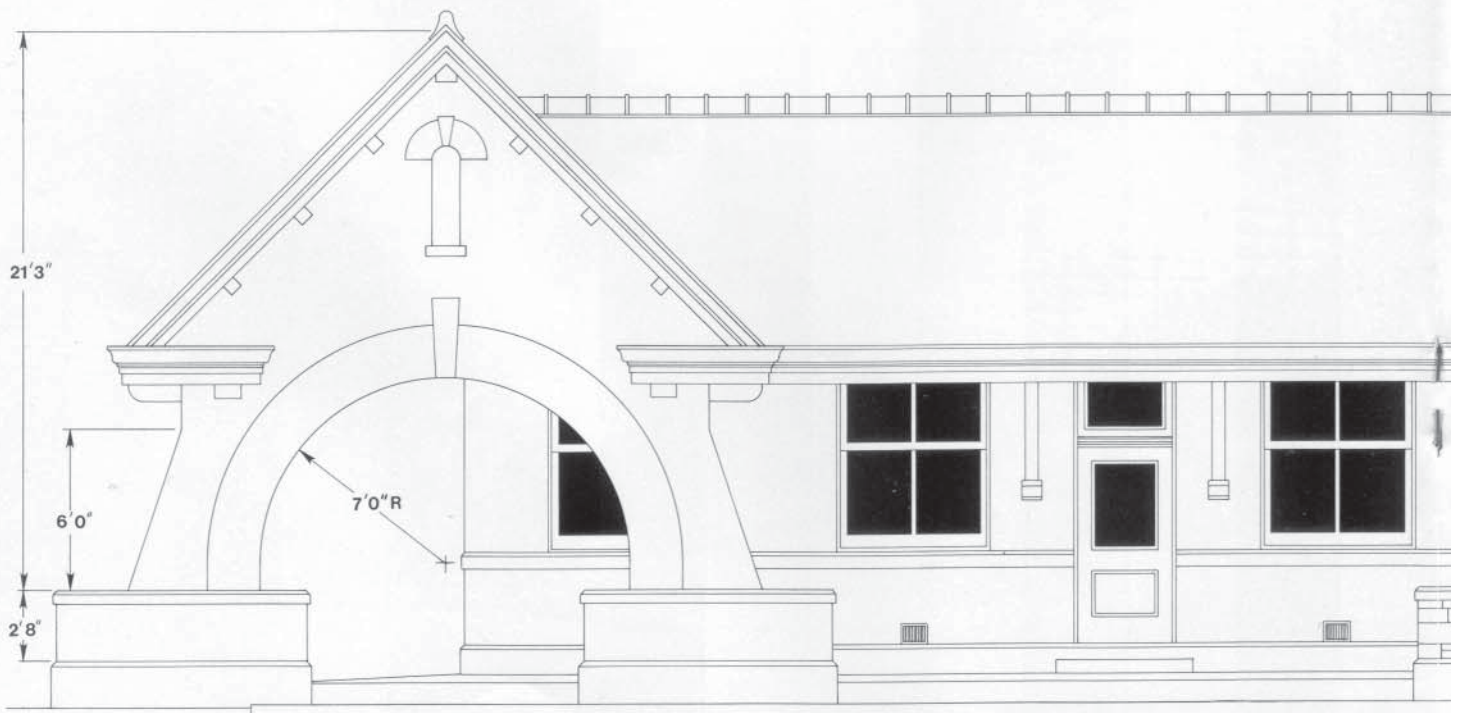
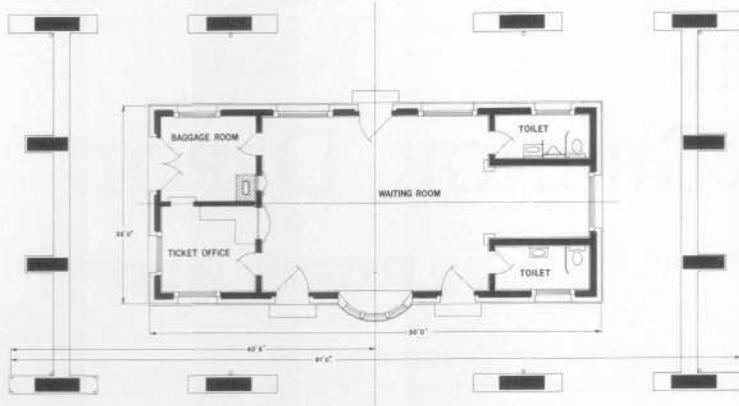


by Roger Boor

Drawn Expressly for
MAINLINE MODELER
Copies of these drawings may be made
for noncommercial use only.

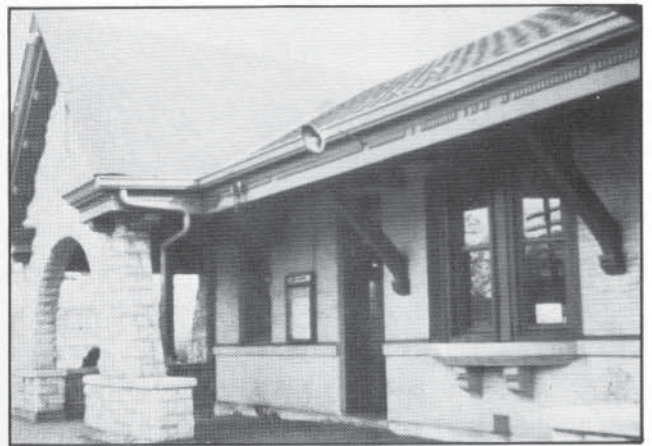
SCALE: 3.5 mm = 1'

INTERIOR
Scale $\frac{3}{64}$ " = 1'

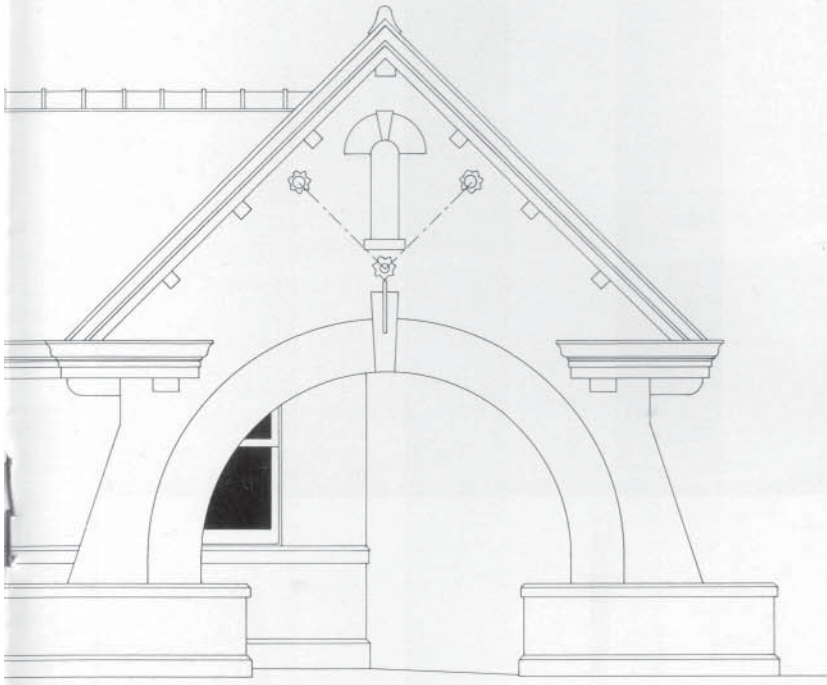




Roger Boor photo



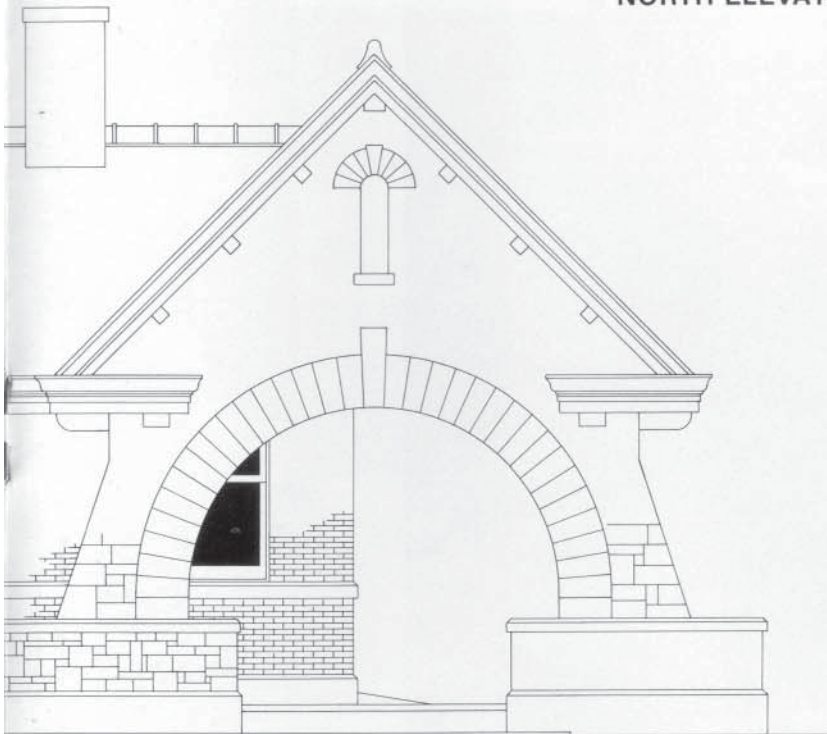
Roger Boor photo



NORTH ELEVATION



Roger Boor photo



SOUTH ELEVATION



Roger Boor photo



Roger Boor photo

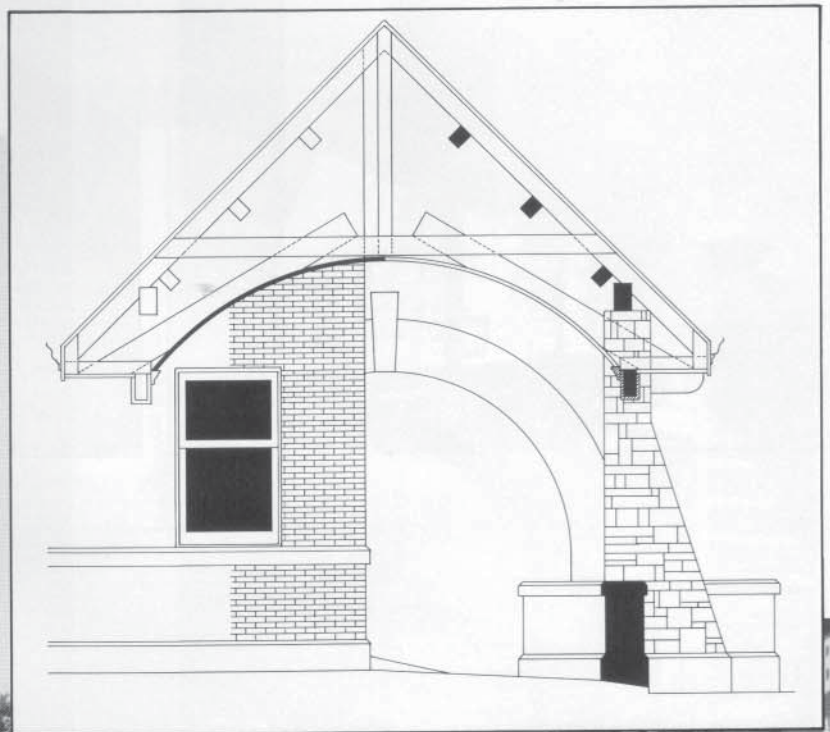
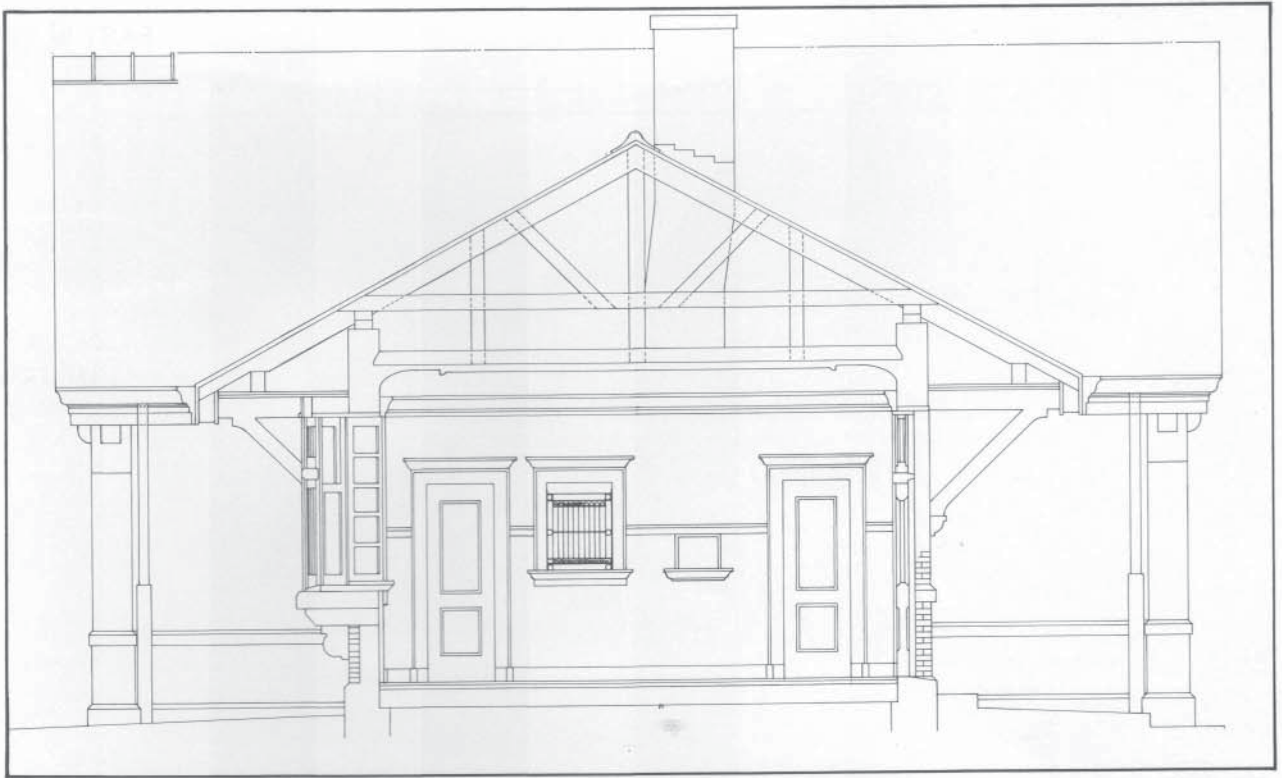


Bruce Meyer photo Stone Avenue Station LaGrange, Illinois June 4, 1977

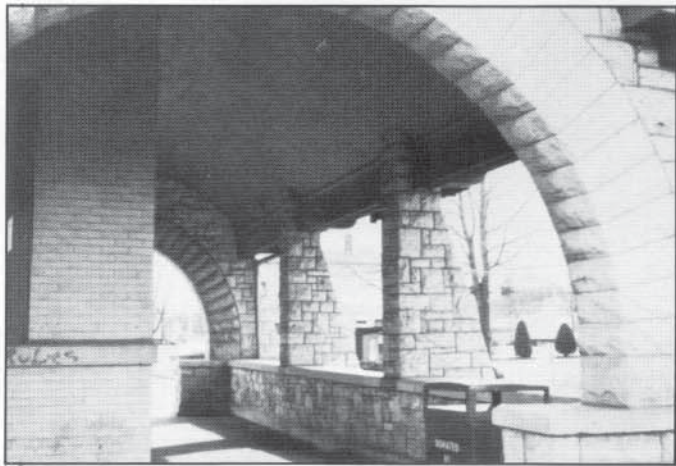
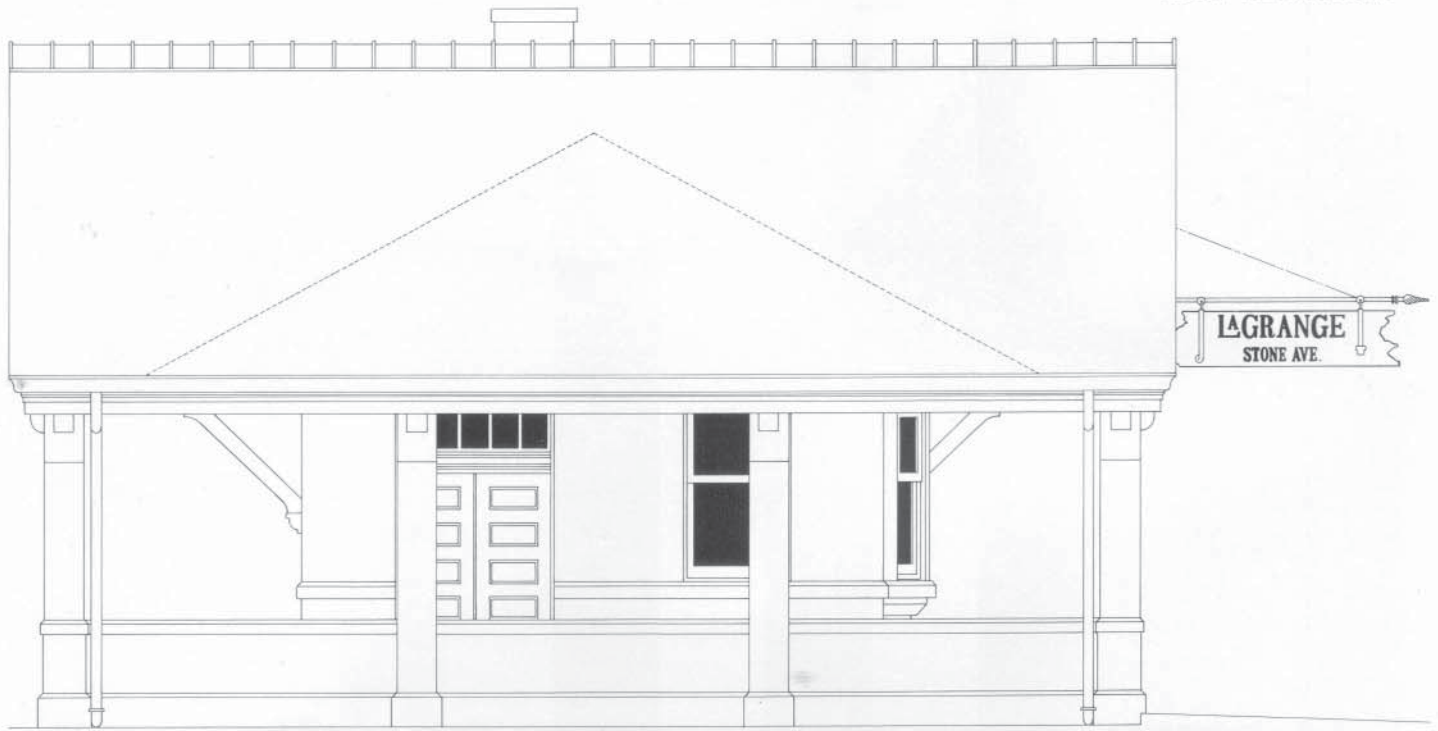


Bruce Meyer photo Stone Avenue Station LaGrange, Illinois August 30, 1974

Bruce Meyer photo Stone Avenue Station LaGrange, Illinois May 31, 1980



EAST ELEVATION



Roger Boor photo



Roger Boor photo



WEST ELEVATION

Bruce Meyer photo Stone Avenue Station LaGrange, Illinois June 4, 1977

Bruce Meyer photo Stone Avenue Station LaGrange, Illinois June 4, 1978

